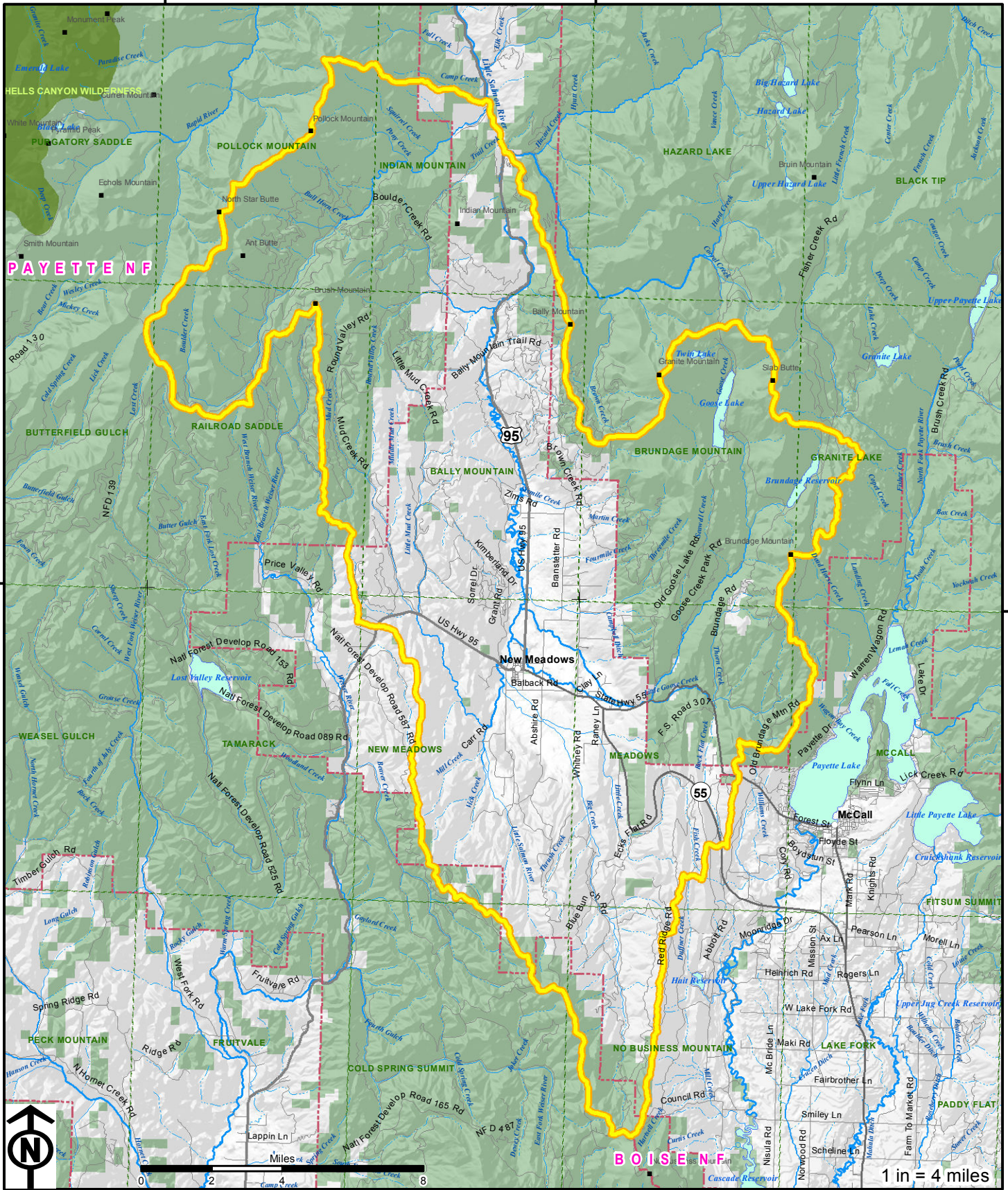


116°30'0"W

116°15'0"W

45°00'N



Date: 6/29/2011

Map is for general reference only. Public or Private land designation is not an indication of hunter access. Official boundary descriptions are in the regulation publications and online at <http://fishandgame.idaho.gov>



Hunt Area

- Mapped Approximately
- National Forest Boundaries
- 7.5 Min. Topo Name (1:24,000)

Land Management

- Designated Wilderness
- Public Land
- Private Land - permission required
- Tribal Land

